



Contract Number: CUA13010

Last Updated: 4 May 2016

Document number: 00972564

IT Servers and Data Storage Devices

1 May 2011 to 30 April 2017

- [About the contract](#)
- [How do I use this contract?](#)
- [What's on offer?](#)
- [Who are the contractors?](#)
- [Buying Rules](#)
- [Need more information?](#)



ABOUT THE CONTRACT

Description

CUA13010 is for the supply of IT Servers and Data Storage Devices (DSDs) to Western Australia Government agencies. This CUA is mandatory for the metropolitan area and non-mandatory for regional areas. Regional agencies have the ability to establish their own arrangements.

CUA13010 is a two panel of products arrangement. Each panel consists of three product categories.

- Panel A – IT Servers covers: Tower Cases; Rack Intensive; and Blade Servers.
- Panel B – Data Storage Devices includes: Storage Solutions; Storage Area Network (SAN) Switches; and Tape Library.

Contract Number

CUA 13010

Contract Term

From 1 May 2011 to 30 April 2017

Status

Mandatory in the Perth region for Western Australian Public Authorities

Note: Please confirm buying rules with your agencies. Existing contracts will need to be fulfilled prior to transition to this CUA.

Categories

- Panel A – IT Servers.
- Panel B – Data Storage Devices

Key Features and Benefits

- Expansion of this CUA to include Data Storage Devices.
- Agencies have a choice of two procurement methods by either using 'Pick and Buy' or seeking quotations from a Panel.
- A procurement threshold of \$150,000 for 'Pick & Buy' from the product catalogue or direct purchase from Contractors under Panel A – IT Servers.
- A procurement threshold of \$500,000 for 'Pick & Buy' from the product catalogue or direct purchase from Contractors under Panel B – Data Storage Devices.
- Agencies can determine their own product specifications to seek quotes from Contractors.
- Expansion on the optional upgrades for IT Servers to include virtualisation solutions as a bundled package, IT server racks, rack mounted UPS
- Set minimum discounts off RRP's to provide further savings.
- Agencies will have the ability to include maintenance and support as part of their buying arrangement.

Optional Upgrades This CUA caters for upgrades to IT Servers and Data Storage Device Solutions as follows:

- Optical Drive unit
- Tape Drive
- Hard Drives
- Memory
- Processors
- Host Bus Adapters (HBA)
- I/O Cards
- Converged Network Adaptor (CNA)
- Network Interface Card (NICs)
- Systems Management Software
- External Storage Support
- Pre-Installed Operating System
- Remote Management Capability
- Mounting Kit/Rails

Additional Items Included in the scope of this CUA is the purchase of the following additional items:

- Hypervisor/Virtualisation s/ware (To be purchased as part of a bundled solution when purchasing IT Servers)
- Associated IT Server and Data Storage Device management software
- Server Racks and accessories
- Rack Mounted UPS
- KVM switch and accessories

NOTE:

'Additional items' are non mandatory for the purpose of supplementing the purchase of IT Servers or Data Storage product solution.

'Additional items' can be bundled with the initial purchase order for a product solution, or purchased separately to supplement the product solution at a later stage.

Contract Manager

A Contract Manager is available to help you to understand and get the most out of this contract. If you have any queries about this contract or this publication, please contact:

Mary Bernard

Tel: (08) 6551 1596

Fax: (08) 9481 0785

Email: mary.bernard@finance.wa.gov.au

Government Procurement

Department of Finance

Optima Centre

16 Parkland Road

OSBORNE PARK WA 6017

Postal Address:

Government Procurement

Department of Finance

Locked Bag 11, Cloisters Square

PERTH WA 6850

Supporting Documents

The following contract documents and other relevant information can be sourced from [Contracts WA](#)

- [Product Catalogue](#)
- [Order Form/Request for Price Confirmation Form](#)

HOW DO I USE THIS CONTRACT?

CUA 13010 for the Supply of IT Servers and Data Storage Devices is MANDATORY for all Western Australian public authorities in the Perth region.

Step 1 **Whats on offer?**

Click [here](#) to choose which products best meet your needs.

Step 2 **Who are the contractors?**

Click [here](#) for a list of the qualified Contractors..

Step 3 **Buying Rules**

Click [here](#) for a list of the qualified Contractors.

Step 4 **Buy it!**

Buy directly from [Contractors](#).

WHAT'S ON OFFER?

There are two panels of products proposed under this CUA. Each panel consists of three product categories. Additional categories may be added over the term of the CUA as government requirements change.

Panel A – IT Servers



Category A1 – Tower Case

Various models of x86 Tower Case or Pedestal Servers.

Standard specification (detailed in Appendix 2) available for Entry-Level, Mid-Range, and High-End configurations.

[Product Specification List](#)

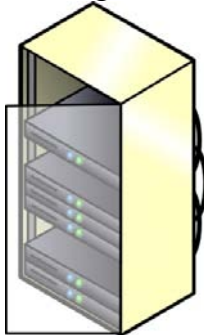


Category A2 – Rack Intensive

Various models of x86 Rack Intensive (Standard 19 inch Rack) Servers.

Standard specification (detailed in Appendix 2) available for Entry-Level, Mid-Range, and High-End configurations.

[Product Specification List](#)



Category A3 – Blade Server

Various models of x86 Blade Servers.

Standard specification (detailed in Appendix 2) available for Entry-Level, Mid-Range, and High-End configurations

[Product Specification List](#)

Panel B – Data Storage Devices

Category B1 – Storage Solutions

Tier 1 - High End Critical Storage Solutions

Tier 2 - Business Storage – High Availability, at lower cost profile

Tier 3 - Commodity Storage - integrity is important, but cost is the over riding factor

Standard specification (detailed in Appendix 2) available for Entry-Level, Mid-Range, and High-End configurations.

[Product Specification List](#)



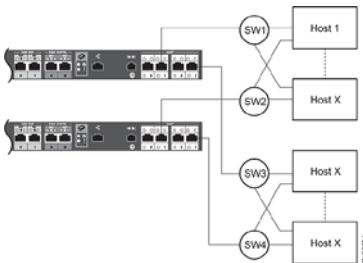
Category B2 – SAN Switches

Director Class Switch and blades

Fibre Channel (FC) Switch

Standard specification (detailed in Appendix 2) available for Entry-Level, Mid-Range, and High-End configurations.

[Product Specification List](#)



Category B3 – Tape Library

Standard specification (detailed in Appendix 2) available for Entry-Level, Mid-Range, and High-End configurations.

[Product Specification List](#)



WHO ARE THE CONTRACTORS?

The matrix below lists all contractors on the CUA and the goods/services they have been contracted to provide. Please refer to the previous section “[What’s on Offer?](#)” for categories.

Panel A – IT Servers

Contractor	Product Brand	Category A1 Tower Case			Category A2 Rack Intensive			Category A3 Blade Server		
		Entry (E)	Mid Range (MR)	High End (HE)	Entry (E)	Mid Range (MR)	High End (HE)	Entry (E)	Mid Range (MR)	High End (HE)
CDM Australia	Hewlett Packard	✓	✓	✓	✓	✓	✓	✓	✓	✓
Cisco Systems Australia	Cisco	X	X	X	✓	✓	✓	✓	✓	✓
DELL Australia	Dell	✓	✓	✓	✓	✓	✓	✓	✓	✓
EDsys Computers	EDsys	✓	✓	X	✓	✓	X	X	X	X
Hewlett-Packard Australia	Hewlett Packard	✓	✓	✓	✓	✓	✓	✓	✓	✓
Lenovo (Australia & New Zealand) Pty Ltd	Lenovo	✓	✓	✓	✓	✓	✓	✓	✓	✓

****Note, IBM no longer supplies X Series Servers under Panel A.**

Panel B – Data Storage Devices

Contractor	Product Brand	Category B1 Storage Solutions			Category B2 SAN Switches			Category B3 STORAGE (TAPE/VTL)		
		Entry (E)	Mid Range (MR)	High End (HE)	Entry (E)	Mid Range (MR)	High End (HE)	Entry (E)	Mid Range (MR)	High End (HE)
<u>CDM Australia</u>	Hewlett Packard	✓	✓	✓	✓	✓	✓	✓	✓	✓
<u>DELL Australia</u>	Dell	✓	✓	✓	✓	✓	✓	✓	✓	✓
	Brocade	X	X	X	✓	✓	✓	X	X	X
<u>EMC Australia</u>	EMC	✓	✓	✓	X	X	X	✓	✓	✓
	Cisco	X	X	X	✓	✓	✓	X	X	X
	StorageTek	X	X	X	X	X	X	✓	✓	✓
<u>Hewlett-Packard Australia</u>	Hewlett Packard	✓	✓	✓	✓	✓	✓	✓	✓	✓
	HDS	✓	✓	✓	X	X	X	X	X	X
<u>Hitachi Data Systems Australia</u>	Cisco	X	X	X	✓	✓	✓	X	X	X
	Brocade	X	X	X	✓	✓	✓	X	X	X
	Quantum	X	X	X	X	X	X	✓	✓	✓
	Falconstor	X	X	X	X	X	X	✓	✓	✓
<u>IBM Australia Limited</u>	IBM	✓	✓	✓	✓	✓	✓	✓	✓	✓
<u>NetApp Australia Pty Ltd</u>	NetApp	✓	✓	✓	✓	✓	✓	✓	✓	✓

CDM Australia



ABN No: 68 009 592 965

Panel A:- IT Servers

- Category A1
- Category A2
- Category A3

Panel B:- DSDs

- Category B1
- Category B2
- Category B3

Product:-Hewlett Packard

Resellers, dealers and service agents

Martin Eyer, General Manager

T: (08) 9202 4477 M: 0416 100 990

F: (08) 9202 4478

E: martine@cdmaust.com.au

Website: <http://www.cdmaust.com.au>

Postal Address:

251-257 Scarborough Beach Rd

MT HAWTHORN WA 6016

Hours:

8.00am to 5.00pm Monday to Friday



All Hewlett Packard IT Server products purchased under this CUA come with three year 8x5 NBD Support and Maintenance.

Cisco Systems Australia Pty Ltd



ABN No: 52 050 332 940

Panel A:- IT Servers

- Category A2
- Category A3

Resellers, dealers and service agents

Ross Smith, Product Sales Specialist

T: (08) 9214 5494 M: 0413 798 093

F: (08) 9486 9873

E: rossmit@cisco.com

Website: <http://www.cisco.com>

Postal Address:

Cisco Systems Pty Ltd

Level 5, Westralia Plaza

167 St Georges Tce

PERTH WA .6000

Hours:

8.00am to 5.00pm Monday to Friday



Dell Australia Pty Ltd



ABN No: 46 003 855 561

Panel A:- IT Servers

- Category A1
- Category A2
- Category A3

Panel B:- DSDs

- Category B1
- Category B2
- Category B3

Resellers, dealers and service agents

Marius Peoples, Account Executive

T: (08) 9470 9650 M: 0427 502 718

F: (02) 8972 3196

E: Marius_Peoples@Dell.com

Website:

Postal Address:

Dell Australia Pty Ltd
Level 28, 140 St Georges Tce,
PERTH WA 6000

Hours:

8.00am to 5.00pm Monday to Friday



All Dell IT Server products purchased under this CUA come with three year 8x5 NBD Support and Maintenance.

EDsys IT Distribution Pty Ltd



ABN No: 64 099 042 878

Panel A:- IT Servers

- Category A1
- Category A2

Resellers, dealers and service agents

Greg McDougall, Sales Manager

T: (08) 9441 1200 M: 0400 223 981

F: (08) 9441 1201

E: greg.mcdougall@edsys.com.au

Website: <http://www.edsys.com.au>

Postal Address:

PO Box 1582,
OSBORNE PARK DC 6916

Hours:

8.00am to 5.00pm Monday to Friday



EMC Australia



where information lives®

ABN No: : 86 699 010 685

Panel B:- DSDs

- Category B1
- Category B2
- Category B3

Resellers, dealers and service agents

Moti Uttam, Senior Account Manager

T: (08) 9420 9046 G: (08) 9420 9000

M: 0402 220 202

F: (08) 9288 1740

E: Moti.Uttam@emc.com

Website: <http://www.emc.com>

Postal Address:

EMC Australia

Level 1, 133 St Georges Terrace

Brookfield Place

PERTH WA 6000

Hours:

8.00am to 5.00pm Monday to Friday



Hitachi Data Systems Australia

HITACHI
Inspire the Next

ABN No: 65 005 610 079

Panel B:- DSDs

- Category B1
- Category B2
- Category B3

Resellers, dealers and service agents

Aidan Kenny, State Manager – Western Australia

T: (08) 9421 8106 M: 0407 847 754

F: (08) 9421 8111

E: aidan.kenny@hds.com

Website:

Postal Address:

Level 13 Allendal Square

77 St George's Terrace

PERTH WA 6000

Hours:

8.00am to 5.00pm Monday to Friday

Hewlett-Packard Australia Pty Limited



ACN No: 004 394 763

ABN No:74 004 394 763

Panel A:- IT Servers

- Category A1
- Category A2
- Category A3

Panel B:- DSDs

- Category B1
- Category B2
- Category B3

Product: Hewlett Packard

Resellers, dealers and
service agents

Sunny Hum, Account Manager

T: (02) 8278 6240 M: N/A

F: (02) 8003 7918

E: mung-sun.hum@hpe.com

E: WACUA@hpe.com

Website: <http://www.hp.com.au>

Postal Address:

HP Australia

410 Concord Road

RHODES NSW 2138

Hours:

8.00am to 5.00pm Monday to Friday



All Hewlett Packard IT Server products purchased under this CUA come with three year 8x5 NBD Support and Maintenance.

IBM Australia Limited



ACN No: 000 024 733

ABN No: 79 000 024 733

Panel B:- DSDs

- Category B1
- Category B2
- Category B3

Product: IBM

Resellers, dealers and service agents

Scott Cowans – Client Executive – Public Sector

M: 0405 486 981

F: (08) 9261 8536

E: wagov@au1.ibm.com

Website: <http://www.ibm.com/au/en/>

Postal Address:

IBM Australia Limited

Level 2, 1060 Hay Street

WEST PERTH WA 6005

Hours:

8.00am to 5.00pm Monday to Friday

Lenovo (Australia & New Zealand)



ACN No: 112 394 411

ABN No: 70 112 394 411

Panel A:- IT Servers

- Category A1
- Category A2
- Category A3

Product: Lenovo

Resellers, dealers and service agents

Wayne Geddis – Account Executive Western Australia

M: 0402 974 441

F: (02) 8003 8318

E: wgeddis@lenovo.com

Website: <http://www.lenovo.com/au/en/>

Postal Address:

Lenovo (Australia & New Zealand)

PO Box 204

GREENWOOD WA 6924

Hours:

8.00am to 5.00pm Monday to Friday

NetApp Australia Pty Ltd



NetApp™
Go further, faster

ABN No: 14 092 499 431

Panel B:- DSDs

- Category B1
- Category B2
- Category B3

**Resellers, dealers and
service agents**

Mike Miller – Account Executive - WA

T: (08) 6557 8804 M: 0459 433 986

F: (08) 6557 8999

E: Mike.Miller@netapp.com

Website: <http://www.netapp.com>

Postal Address:

NetApp Australia Pty Ltd

Level 25

108 St Georges Terrace

PERTH WA 6000

Hours:

8.00am to 5.00pm Monday to Friday



BUYING RULES

Government agencies located in the Perth region must purchase from the contract as outlined below. Other approved users may use these buying rules to guide their purchasing decisions. Agencies can purchase goods supplied on each panel as follows:

Note: The following table sets out the suggested minimum requirements for the procurement method, which a Public Authority must use, for the procurement of products or services under CUA, depending on the total estimated price of that procurement and the monetary threshold it falls into.

PANEL A - IT Servers	
Monetary Threshold	Buying Process
Direct Purchase for products valued below \$150,000 (inc GST)	Panel members may be accessed directly through 'Pick and Buy' from the published Product catalogue. OR Identify user specification or use 'notional basket'. Seek quotes from one or more Contractor(s) or their nominated dealers.
Request For Quotation for products valued at \$150,000 (inc GST) or above	Identify user specification or use 'notional basket' (government standard specification). Request written quotes from all approved Contractors or their nominated dealers.

PANEL B – Data Storage Devices	
Monetary Threshold	Buying Process
Direct Purchase for products valued below \$500,000 (inc GST)	Panel members may be accessed directly through 'Pick and Buy' form the published Product Catalogue OR Identify user specification or use 'notional basket'. Seek quotes from one or more Contractor(s) or their nominated dealers.
Request For Quotation for products valued at \$500,000 (inc GST) or above	Identify user specification or use 'notional basket'. Request written quotes from all approved Contractors or their nominated dealers.

The CUA **Order / Request Form** has been designed for use as a quotation form and an order form, to make this process quick and easy.

Please note:

1. Procurements \$250,000 and above require Department of Finance Government Procurement involvement. For best practice, buyers are advised to contact their procurement representatives early in the procurement stage. Click [here](#) for a list of Finance procurement representatives.
2. Agencies are **NOT** required to publish the contract details on Tenders WA where the awarded contract value is \$50,000 or above or the awarded contract value is varied by \$50,000¹ or more, after the successful quotation has been accepted.
3. Agencies are **NOT** required to submit to the State Tenders Review Committee (STRC) Procurement Plans, Evaluation Reports, Contract Management Plans and Variations. Procurements with an estimated contract value above \$5 million only applies.

Direct Purchase (Pick and Buy)

Agencies will be able to order and purchase from any contracted suppliers for one off purchases below \$150,000 for Panel A - IT Servers or below \$500,000 for Panel B – DSDs. Buyers will choose from the Product Catalogue schedule which will include a single unit price for Products under contract.

Prices for this CUA are fixed so buyers can pick and buy the specified products from the Contractors without calling quotes or tenders.

Buyers should view the Price Schedule to obtain prices for the items they require. Where more than one Contractor is appointed to a category or sub category, buyers can evaluate which Contractor represents best value for money for their needs, then contact the Contractor to make their purchase.

Orders should be placed directly with Contractors by phone, e-mail or fax.

Buyers should check each individual Contractor's details as to which communication method is preferred for placing orders.

If you are using a Contractor for the first time, you will probably need to establish a new account.

Request for Quotation

The Contractor or nominated dealer/supplier may receive and respond to Requests for Quotations.

Under the monetary thresholds, quotations may be sought from either the Contractor or their dealer/supplier.

Quotations must be sought from all panel Contractors where the volume exceeds the monetary threshold for the respective panel.

Qualification Requirements

Contractors qualified to supply under this CUA have been evaluated for their capacity to supply in large volumes to government agencies, irrespective of location; suitability of their products to meet government's broad business requirements; capacity to service and support their products; and ability to provide reports to government across all business segments. As such, agencies may limit their value-for-money decision to consideration of technical performance (e.g. bench testing) and/or price, as appropriate. Select the Contractor

¹ Either individually or cumulatively.

that offers you the best value for money for your requirements and be sure to document your value for money decision.

Where written quotations have been obtained (usually for high volume purchases or non-standard specifications), be prepared to provide unsuccessful suppliers with the name and total contract price of the successful Respondent and a debriefing on request.

Pricing

Buyers should view the Product Catalogue to obtain prices for the items they require. Where more than one Contractor is appointed to a category, buyers should evaluate which Contractor represents best value for money for their needs, then contact the Contractor to make their purchase.

Contractors will be able to amend their prices for products offered under the Pick and Buy Arrangement on a quarterly basis (every three months). Only the 'Pick and Buy' prices published by Finance apply.

Contractors may authorise nominated dealers/resellers/agents to receive and carry out 'Pick and Buy' purchase orders on their behalf. Nominated dealers/resellers/agents may only supply products and services in accordance with the prices offered by the authorising qualified supplier and all other terms and conditions of the CUA.

Additional Charges

Additional charges may apply to certain 'Pick and Buy' purchases. Any additional charges are to be agreed between the buyer and the Contractor as part of accepting the assignment i.e. through the Order Form.

Any additional charges must be itemised separately in the buyer's order and on the buyer's invoice.

Delivery

The required timeframe for delivery of all Products, from receipt of order will:

- Not exceed 30 working days from the receipt of the order for metropolitan purchases and 40 working days for purchases requiring regional delivery; or
- Be as agreed with the Customer.

If an order cannot be supplied in accordance with the Order, the Contractor must notify the Customer within 24 hours of the receipt of the Order.

Delivery is free to any nominated metropolitan delivery point including any nominated carrier's receiving depot where consignment to country areas is involved. A freight/delivery surcharge may apply to regional and remote delivery points. The agreed price is detailed in the table below. For details on regional delivery options speak to the [Contract Manager](#).

Contractor	Region/Zone	Delivery Cost Per Unit (inc GST)
CDM Australia	All Zones	Free into store
Cisco Systems	Zone 1 (Perth)	Free into store
Dell Australia	All Zones	Free into store
EDsys Computers	Zone 1 (Perth)	Free into store

Contractor	Region/Zone	Delivery Cost Per Unit (inc GST)
	Zone 2	\$45
	Zone 3	\$65
EMC Australia	All Zones	Free into store
Hewlett-Packard Australia	All Zones	Free into store
IBM Australia	Zone 1 (Perth)	Free into store
Lenovo (Australia & New Zealand)	Zone 1 (Perth)	Free into store
NetApp Australia	All Zones	Free into store

Discounts

All Contractors have offered minimum discounts that will be applied to the following product categories.

Contractor	Category	Product	Minimum Discount off (RRP)	Minimum Discount off (RRP) Warranty & Maintenance
CDM Australia	A1 - Tower Case	Hewlett Packard	50%	45%
	A2 - Rack Intensive	Hewlett Packard		
	A3 - Blade	Hewlett Packard	55%	
	B1 – Storage Solutions	Hewlett Packard	50%	
	B2 – SAN Switches Entry Level	Hewlett Packard		
	B2 – SAN Switches Mid Range	Hewlett Packard	60%	
	B2 – SAN Switches High End	Hewlett Packard	58%	
	B3 – Storage (TAPE/VTL) Entry Level	Hewlett Packard	50%	
	B3 – Storage (TAPE/VTL) Mid Range	Hewlett Packard		
B3 – Storage (TAPE/VTL) High End	Hewlett Packard	60%		
Cisco Systems	A2 - Rack Intensive	Cisco	55%	50%
	A3 - Blade	Cisco		
EDsys Computers	A1 - Tower Case	Edsys	20%	20%
	A2 - Rack Intensive	Edsys		
Dell Australia	A1 - Tower Case Entry Level	Dell	45%	53%
	A1 - Tower Case Mid Range	Dell	42%	51%
	A1 - Tower Case High End	Dell	42%	48%
	A2 - Rack Intensive Entry Level	Dell	40%	53%
	A2 - Rack Intensive Mid Range	Dell	43%	52%
	A2 - Rack Intensive High End	Dell	40%	52%

Contractor	Category	Product	Minimum Discount off (RRP)	Minimum Discount off (RRP) Warranty & Maintenance
	A3 – Blade Server Entry Level	Dell	40%	54%
	A3 – Blade Server Mid Range	Dell	40%	52%
	A3 – Blade Server High End	Dell	40%	55%
	B1 – Storage Solutions Entry Level	Dell EMC	46%	46% 48%
	B1 – Storage Solutions Mid Range	Dell EMC	46%	46% 57%
	B1 – Storage Solutions High End	Dell EMC	58% 55%	51% 61%
	B2 – SAN Switches Entry Level	Brocade		47%
	B2 – SAN Switches Mid Range	Brocade	38%	46%
	B2 – SAN Switches High End	Brocade	35%	48%
	B3 – Storage (TAPE/VTL) Entry Level	Dell EMC	51% 49%	51% 49%
	B3 – Storage (TAPE/VTL) Mid Range	Dell EMC	52% 46%	52% 46%
	B3 – Storage (TAPE/VTL) High End	Dell EMC	65% 45%	65% 45%
EMC Australia	B1 – Storage Solutions Entry Level	EMC	50%	
	B1 – Storage Solutions Mid Range	EMC		55%
	B1 – Storage Solutions High End	EMC	62%	
	B2 – SAN Switches Entry Level	Cisco	55%	
	B2 – SAN Switches Mid Range	Cisco		50%
	B2 – SAN Switches High End	Cisco	62%	

Contractor	Category	Product	Minimum Discount off (RRP)	Minimum Discount off (RRP) Warranty & Maintenance
	B3 – Storage (TAPE/VTL)	StorageTek	50%	20%
Hewlett-Packard Australia	A1 - Tower Case	Hewlett Packard	50%	
	A2 - Rack Intensive	Hewlett Packard		
	A3 - Blade	Hewlett Packard	55%	
	B1 – Storage Solutions	Hewlett Packard	50%	
	B2 – SAN Switches Entry Level	Hewlett Packard		45%
	B2 – SAN Switches Mid Range	Hewlett Packard	60%	
	B2 – SAN Switches High End	Hewlett Packard	58%	
	B3 – Storage (TAPE/VTL) Entry Level	Hewlett Packard	50%	
	B3 – Storage (TAPE/VTL) Mid Range	Hewlett Packard		
	B3 – Storage (TAPE/VTL) High End	Hewlett Packard	60%	
Hitachi Data Systems	B1 – Storage Solutions	HDS	70%	
	B2 – SAN Switches	Brocade	55%	25%
		Cisco	60%	
	B3 – Storage (TAPE/VTL)	Quantum	50%	
Falconstor		50%		
IBM Australia	B1 – Storage Solutions Entry Level	IBM	55%	50%
	B1 – Storage Solutions Mid Range	IBM	65%	65%
			85%	85%

Contractor	Category	Product	Minimum Discount off (RRP)	Minimum Discount off (RRP) Warranty & Maintenance
	B1 – Storage Solutions High End	IBM		
	B2 – SAN Switches Entry Level	IBM	65%	65%
	B2 – SAN Switches Mid Range	IBM	75%	65%
	B2 – SAN Switches High End	IBM	70%	70%
	B3 – Storage (TAPE/VTL)	IBM	55%	55%
Lenovo (Australia & New Zealand)	A1 – Tower Case	Lenovo		
	A2 - Rack Intensive	Lenovo	65%	50%
	A3 – Blade Server	Lenovo		
NetApp Australia	B1 – Storage Solutions Entry Level	NetApp	60%	
	B1 – Storage Solutions Mid Range	NetApp	65%	
	B1 – Storage Solutions High End	NetApp	70%	50%
	B2 – SAN Switches	NetApp	0%	
	B3 – Storage (TAPE/VTL)	NetApp	65%	

Insurances and Indemnities, Liabilities and Releases

The minimum insurance requirements to be maintained by Contractors are:

- Product Liability insurance – Not less than \$5M per occurrence and limited in the annual aggregate
- Public Liability insurance - Not less than \$5M per occurrence and unlimited in the annual aggregate
- Professional Indemnity insurance – Not less than \$1M for any one claim in the annual aggregate with one automatic reinstatement of the full sum insured
- Workers Compensation insurance – in accordance with the provisions of the Workers Compensation and Injury Management Act 1981 (WA).

Customers may specify a high insurance cover if required. Where this may result in additional cost to the customer the contract is required to specify the cost at the time of the order.

Customers should be aware that limitations may apply to contractors' Indemnities, Releases and Liabilities. Please contact the contract manager to discuss limits that apply and/or to obtain current insurance certificates.

Contract Terms and Conditions

Contractors have agreed to the Department of Finance's Request Conditions and General Conditions of Contract (August 2010). Agencies should not agree or sign any alternative terms and conditions. There are some agreed changes with the following contractors:

- Cisco Systems Australia;
- Dell Australia;
- Hitachi Data Systems
- IBM Australia Limited;
- Lenovo (Australia & New Zealand); and
- NetApp Australia Pty Ltd

Please contact the Contract Manager for copies of the amended terms and conditions for these contractors.

Warranty

The following minimum warranties are included as standard:

A minimum one (1) year manufactures warranty; including a four (4) hour response time², and will cover all materials, parts, labour and travel unless otherwise agreed in writing by the Customer at the time of placing the order.

Contractors must be able to provide co-termination maintenance arrangements to allow buying agencies to align termination of maintenance support arrangements.

Warranty upgrades are also available. These options are detailed in the Product Catalogue.

² Where the product is located within the 50km land radius from the Contractor's nearest service agent. For locations greater than 50km land radius from the Contractor's nearest service agent, the service technician must be on site as agreed with customer at time of placing Order.

Outside Zone 1 – Perth Region, 50 km distances will be replaced with 20km.

Payment by Purchasing Card

The Government Purchasing Card offers a quick and convenient method of payment allowing many goods and services to be efficiently purchased.

Always remember to advise that you will be paying by Government Purchasing Card, at the time of ordering the product or service, and ensure it is clearly understood that the tax invoice must be sent directly to you, the cardholder.

Exemption from using this CUA

Finance is responsible for processing and approving all requests from public authorities seeking exemption from using a mandatory Common Use Arrangement (CUA). Requests for an exemption are considered on a case-by-case basis, and a requesting agency must be able to demonstrate that a business need cannot be adequately met by the relevant CUA.

Exemption requests should be directed to the Director ICT Sourcing in the first instance. Requests for exemption may be received by posted letter or email, but must be in writing and provide sufficient explanation and background to enable the request to be considered. The requesting officer should be the Accountable Authority or delegate of the agency.

Complimentary Feedback and Complaints Resolution

Finance aims to continuously improve the services it provides to Customers and welcomes feedback on the level of satisfaction experienced under this contract or with the Contractor(s) performance. If you are dissatisfied with the goods and/or service provided by the Contractor or have any specific concerns, these should be discussed in the first instance directly with the Contractor.

If the problem or issue is not resolved to your satisfaction, please log your complaints via Finance's [online Feedback Management System](#).

The online system provides for both complimentary feedback and complaint resolution considerations.

NEED MORE INFORMATION?

Appendices

- ⇒ [Appendix 1: Qualified Contractors and Nominated Dealers](#)
- ⇒ [Appendix 2: Specifications](#)
- ⇒ [Appendix 3: Accessing CUA Information Online](#)
- ⇒ [Appendix 4: Order/ Request Form](#)

Forms and Tools

- ⇒ [Contractors Details](#)
- ⇒ [Product Catalogue](#)
- ⇒ [Order/ Request Form](#)

Still need more information?

- ⇒ [Contact the Contract Manager](#)

APPENDIX 1: QUALIFIED CONTRACTORS AND NOMINATED DEALERS

The companies listed on the following pages are able to provide the following services:

*Dealer Type: Codes to be used to indicate the tasks the Dealer(s) will undertake on the Contract:

- (a) Make Sales; and/or
- (b) Receive and respond to Request for Quotes; and/or
- (c) Carry out delivery; and/or
- (d) Carry out warranty services; and/or
- (e) Carry out other services under the Contract; or

ALL a, b, c, d and e.

CDM Metropolitan Dealer

Dealer and Address	Dealer Type	Telephone	Fax/Email
CDM Australia 251-257 Scarborough Beach Rd MT HAWTHORN WA 6018	ALL	(08) 9202 4477	(08) 9202 4478 HPsales@cdmaust.com.au

CDM Regional Dealer

Dealer and Address	Dealer Type	Telephone	Fax/Email
CDM Australia 251-257 Scarborough Beach Rd MT HAWTHORN WA 6018	ALL	(08) 9202 4477	(08) 9202 4478 HPsales@cdmaust.com.au

Cisco Systems Metropolitan Dealers

Dealer and Address	Dealer Type	Telephone	Fax/Email
Cisco Systems Pty Ltd Level 5 167 St Georges Tce PERTH WA 6000	ALL	(08) 9214 5400	(08) 9486 9873 emmalong@cisco.com.au
Alphawest Pty Ltd Level 2 1260 Hay Street PERTH WA 6005	ALL	(08) 9429 6000	(08) 9429 6030 Perth.SalesSupport@alphawest.com.au
Data 3 Level 2 76 Kings Park Road WEST PERTH WA 6005	a),b),c)	1300 232 823	1300 328 232 data3.com.au
Dienst Consulting Suite 47, Ground Floor 50 St Georges Tce PERTH WA 6000	a),b),c)	0421 325 196	alan.hodson@dienstconsulting.com
Dimension Data 218 St Georges Tce PERTH WA 6000	ALL	(08) 9221 7744	(08) 9311 7199 wasalessupport@didata.com.au
Empired Limited Level 13 256 Adelaide Tce PERTH WA 6000	ALL	(08) 9223 1234	(08) 9223 1230 info@empired.com
Fujitsu Australia Limited Level 15 191 St Georges Tce PERTH WA 6000	a),b),c)	(08) 9212 5062	wasales@au.fujitsu.com
IBM Australia Limited Level 1 1060 Hay Street PERTH WA 6005	a),b),c)	0405 486 981	Scott Cowans scowans@au1.ibm.com
Kytec Group Level 1 40 Subiaco Square Rd SUBIACO WA 6008	a),b),c)	1300 282 190	1300 282 149 quotes@kytec.com.au
L7 Solutions Pty Ltd Level 14 256 Adelaide Tce PERTH WA 6000	ALL	(08) 9221 7744	(08) 9221 8199 reception@L7.com.au

Perfekt Pty Ltd Level 1 100 Havelock Street WEST PERTH WA 6005	a),b),c)	(03) 9330 9933	Craig.tamlin@perfekt.com.au
Portal IT Suite 7 266 Hay Street SUBIACO WA 6008	a),b),c)	0424 329 188	Rod Dunstan rod.dunstan@portalit.com.au
R1i Services 58 Walcott Street MOUNT LAWLEY 6050	a),b),c)	0451 977 600 (08) 6180 4380	(08) 6316 4511 Martin Conway mconway@r1i.com.au
Saxxon IT Suite 7 266 Hay Street SUBIACO WA 6008	a),b),c)	0412 223 295	(08) 9305 8001 sales@saxxon.com.au
Southern Cross Computer Systems Level 18 152 – 158 St Georges Tce PERTH WA 6000	a),b),c)	0418 914 817 (08) 9288 1761	Marcus Tang Mtang@sccs.com.au
UXC Connect Level 1 147 Colin Street WEST PERTH WA 6005	a),b),c)	(08) 9346 8901	(08) 9322 6077 chris.upstone@uxcconnect.com.au
Xpanse 18 Emerald Tce WEST PERTH WA 6005	a),b),c)	(08) 9322 6767	(08) 9322 6077 Malcolm.Cole@xpanse.com.au

Cisco Systems Regional Dealer

Dealer and Address	Dealer Type	Telephone	Fax/Email
Alphawest Bunbury Office Leschenault Quays Unit 15 Level 12 Austral Parade BUNBURY WA 6230	ALL	(08) 9778 8950	(08) 9791 3024 Perth.SalesSupport@alphawest.com.au

Dell Metropolitan and Regional Dealers

Dealer and Address	Dealer Type	Telephone	Fax/Email
Dell Australia Pty Ltd Level 28 140 St Georges Tce PERTH WA 6000	ALL	0427 502 718	(02) 8972 6026 Marius_peoples@dell.com
Anittel Pty Ltd Unit 3, 75 Erindale Rd BALCATTA WA 6021	ALL	08 6240 9413	Jenny Alvarado jenny.alvarado@anittel.com.au
Cirrus Networks Pty Ltd 8A, 531 Hay Street SUBIACO WA 6008	(b), (e)	08 6180 4222	08 9381 2310 frank@cirrusnetworks.com.au
Datacom Systems (WA) Pty Ltd Level 2 184 Adelaide Tce PERTH WA 6000	(b), (e)	08 6466 6888	08 9221 3570 Basil.lenzo@datacom.com.au
Denver Technology (Australia) Pty Ltd 11 Northwood Street WEST LEEDERVILLE WA 6007	(b), (e)	08 94238080	08 94248081 ian.leonard@denver.com.au
Fujitsu Australia 118 Talavera Rd Macquarie Park NSW 2113	(b), (e)	08 9212 5062	08 9212 5300 yogesh.wani@au.fujitsu.com
Future Logic Level 1 620 Newcastle Street LEEDERVILLE WA 6007	ALL	08 9471 6500	Nathan Colyer-Long nathan.colyer@futurelogic.com.au
Stott Hoare 86 Walters Drive OSBORNE PARK WA 6017	(b), (e)	08 9244 000	08 9242 4444 jloader@stotthoare.com.au

EDsys Metropolitan Dealer

Dealer and Address	Dealer Type	Telephone	Fax/Email
EDsys Computers Unit 2/321 Selby St OSBORNE PARK WA 6017	ALL	(08) 9441 1200	(08) 9441 1201 support@edsys.com.au
ASK Consultants Pty Ltd 49 Hay Street SUBIACO WA 6008	ALL	(08) 9380 4000	(08) 9382 1799 david@askconsultants.com.au
Computer Care Australia Suite C5, 225 Bagot Road SUBIACO WA 6008	ALL	0406 454 110 1300 100 919	Aaron D'Oswaldo Aaron.dosualdo@computercare.com.au
TEHCARE Services Unit 1/11 Collingwood St OSBORNE PARK WA 6017	ALL	(08) 9421 9421	(08) 9421 9422 Pault@techcare.com.au

EDsys Regional Dealers

Dealer and Address	Dealer Type	Telephone	Fax/Email
Multigroup Computers Unit 3/89 Cockburn Rd ALBANY WA 6330	ALL	(08) 9842 1474	(08) 9842 5023 sales@multigroupcomp.com.au
Best Kimberly Computing 91 Guy Street BROOME WA 6725	ALL	(08) 9193 7254	(08) 9193 7254 manager@bestcomputing.com.au
Masterlink Computers Unit 11 Homemaker Centre Blair Street BUNBURY WA 6230	ALL	(08) 9791 2455	(08) 9791 2457 service@masterlinkcomputers.com
Computer West 50 Bussell Highway BUSSELTON WA 6280	ALL	(08) 9754 2324	(08) 9754 2928 peterm@computerwest.com.au
Leading Edge Computers Carnarvon 322 Robinson Street CARNARVON WA 6701	ALL	(08) 9941 3366	(08) 9941 3866 carol@leadingedgecarnarvon.com.au
South West Computable 54a Bussell Highway COWARAMUP WA 6284	ALL	(08) 9755 5406	(08) 9755 5048 swc@computable.com.au

Arrowsmith Midwest Shop 4&5 33 Moreton Tce DONGARA WA 6525 Unit 1, 18 Anzac Tce GERALDTON WA 6530	ALL	(08) 9927 2144 (08) 9964 2225	(08) 9927 2144 Donna@lecdongara.com.au
Wallis Computer Solutions 23 Johnston Street DALWALLINU WA 6609	ALL	(08) 9961 1803	(08) 9961 1804 sales@wcsdally.com.au
Bay of Isles Computers 63B Dempster Street ESPERANCE WA 6450	ALL	(08) 9071 5542	(08) 9071 5549 paulw@boic.com.au
Market Creations Level 1 201 Foreshore Drive GERALDTON WA 6530	ALL	(08) 9920 8555	(08) 9920 8556 service@marketcreations.com.au
Hit Solutions 118A Brookman Street KALGOORLIE WA 6430	ALL	(08) 9091 9855	(08) 9093 0811 service@hitsolutions.com.au
Norwest Communications Shop 2 Lot 3912 Sherlock Crescent KARRATHA WA 6714	ALL	(08) 9143 1134	(08) 91432 1135 simon@nwcomms.com.au
MGS Computer Services 44 Clive Street KATANNING WA 6317	(a)	(08) 9821 4441	(08) 9821 5252 mgs@wn.com.au
Winning Solutions Unit 4 30-32 Rose Street MANJIMUP WA 6258	ALL	(08) 9771 8155	(08) 9771 8144 ben@winningwa.com.au
Avon Computech 98 Fitzgerald Street NORTHAM WA 6401	ALL	(08) 9622 5190	(08) 9622 5780 rob@avoncomputech.com
Professional Business Equipment 15 Byass Street SOUTH HEDLAND WA 6722	ALL	(08) 9172 2256	(08) 9140 2302 service@pbe.com.au
Norwest Communications 10 Schillamen Way WEDGEFIELD WA 6721	ALL	(08) 9172 1011	(08) 9140 1722 kris@nwcomms.com.au

Adtech Computer Systems Unit 7 14 Commodore Drive ROCKINGHAM WA 6168	ALL	(08) 9527 7926	(08) 9527 7515 service@adtechcomputers.com.au
Tom Price Computer Services Shop 6 Tom Price Shopping Centre TOM PRICE WA 6751	(a)	(08) 9189 2232	(08) 9188 1131 tpcs@westnet.com.au
Computer Care Australia Suite C5 225 Bagot Road SUBIACO WA 6008	ALL	0406 454 110 1300 100 919	Aaron D'Oswaldo Aaron.dosualdo@computercares.com.au

EMC Australia Metropolitan and Regional Dealers

Dealer and Address	Dealer Type	Telephone	Fax/Email
Amcom Telecommunications Ltd Level 22 44 St Georges Tce PERTH WA 6000	(a),(b),(c),(e)	(08) 9244 6000	(08) 9244 6591 sean.dsouza@amcom.com.au
Atos Australia Suite 3 460 Roberts Road SUBIACO WA 6008	(a),(b),(c),(e)	(08) 9381 8911	(08) 9381 6544 gary.roberts@atos.net
Cirrus Network Ltd Unit 8A 531 Hay Street SUBIACO WA 6008	(a),(b),(c),(e)	(08) 6180 4222	(08) 9381 2310 grahame@cirrusnetworks.com.au
Data#3 Limited Level 2 76 Kings Park Road WEST PERTH WA 6005	(a),(b),(c),(e)	(08) 9420 0529	1300 32 82 32 paul_mitchell@data3.com.au
Datacom Systems WA Pty Ltd Level 2 184 Adelaide Tce EAST PERTH WA 6004	(a),(b),(c),(e)	(08) 6466 6888	wapurchasing@datacom.com.au
Dienst Consulting 59 Parry Street EAST PERTH WA 6004	(a),(b),(c),(e)	1300 487 378	(08) 6270 6370 accounts@dienstconsulting.com
Dimension Data 218 St Georges Tce PERTH WA 6000	ALL	(08) 9311 7111	(08) 9311 7199 wasalessupport@didata.com.au
Fujitsu Australia Limited Level 15 191 St Georges Tce PERTH WA 6000	(a),(b),(c),(e)	(08) 9212 5062	wasales@au.fujitsu.com
Portalit Suite 7 266 Hay Street SUBIACO WA 6008	(a),(b),(c),(e)	(08) 6365 2141	(08) 6314 6648 rod.dunstan@portalit.com.au

Saxxon IT Pty Ltd
Suite 5
531 Hay Street (a),(b),(c),(e) (08) 9380 8321 sales@saxxon.com.au
SUBIACO WA 6008
(EMC ASN Certified
Partner)

Hewlett-Packard Metropolitan Dealers

Dealer and Address	Dealer Type	Telephone	Fax/Email
Hewlett-Packard Australia 91 Havelock Street WEST PERTH WA 6000	ALL	13 13 47	(08) 9288 0603 Sales - cuaserversales@hp.com Orders - au_directorders@hp.com
CDM Australia 251-257 Scarborough Beach Road MT HAWTHORN WA 6016	(a),(b),(d),(e)	(08) 9202 4477	(08) 9202 4478 HPsales@cdmaust.com.au
Staples Australia Pty Ltd 23 Miles Road KEWDALE WA 6105	(a),(b),(d),(e)	(08) 9365 5355	(08) 9365 5310 timothy.tseng@staples.com.au
Data#3 Limited Level 2 76 Kings Park Road WEST PERTH WA 6005	(a),(b),(d),(e)	(08) 9420 0525	1300 32 82 32 samantha_best@data3.com.au
Datacom Systems (WA) Level 2 184 Adelaide Tce EAST PERTH WA 6004	(a),(b),(d),(e)	(08) 6466 6888	(08) 9380 4226 wasales@datacom.com.au
Empired Ltd Level 13 256 Adelaide Tce PERTH WA 6000	(a),(b),(d),(e)	(08) 92231234	(08) 9223 1230 Anne.dunne@empired.com
Fujitsu Australia Limited Level 15 191 St Georges Tce PERTH WA 6000	(a),(b),(d),(e)	(08) 9212 5062	wasales@au.fujitsu.com
Portal IT Suite 7 266 Hay Street SUBIACO WA 6008	ALL	(08) 6365 2141	(08) 6314 6648 sales@portalit.com.au

Managed System Services Lower Ground Floor 26 Clive Street WEST PERTH WA 6005	(a),(b),(d),(e)	(08) 9436 5478	(08) 9324 1959 Sales – sales@msservices.net.au Orders - kwebb@msservices.net.au
WJ Moncrieff Pty Ltd 2 Oswald Street VICTORIA PARK WA 6100	(a),(b),(d),(e)	(08) 9473 3888	(08) 9473 3860 sales@moncrieff.com.au
Red11 Pty Ltd Suite 3 642 Albany Highway VICTORIA PARK WA 6100	(a),(b),(d),(e)	(08) 9361 2711	(08) 9472 4299 Sales@red11.com.au
R1i Services Level 27 44 St Georges Tce PERTH WA 6000	(a),(b),(d),(e)	(08) 6316 4585	(08) 9631 64511 sales@r1i.com.au
Stott + Hoare 28 Hasler Road OSBORNE PARK WA 6017	(a),(b),(d),(e)	(08) 9244 0000	(08) 9445 7604 jloader@stotthoare.com.au
Bizquip Solutions Unit 14 3 King Edward Road OSBORNE PARK WA 6017	(a),(b),(d),(e)	(08) 9244 2290	(08) 9244 1623 info@bizquip.com.au
Cirrus Networks Pty Ltd Unit 8 531 Hay Street PERTH WA 6008	(a),(b),(d),(e)	1800-2-CIRRUS	info@cirrusnetworks.com.au
Perfekt Pty Ltd Level 1 100 Havelock Street WEST PERTH WA 6005	(a),(b),(c),	0458 508 264 (08) 6500 6601	Ms Lena Tamlin lena.tamlin@perfekt.com.au
Hayes Information Systems 3/267 St Georges Tce PERTH WA 6000	(a),(b),(c),	0438 930 111 (08) 9261 7788	(08) 9261 7700 duncan@hayesis.com.au

Hewlett-Packard Regional Dealers

Dealer and Address	Dealer Type	Telephone	Fax/Email
Best Kimberley Computing 91a Guy Street BROOME WA 6725	(a),(b),(d),(e)	(08) 9193 7254	(08) 9193 6725 Sales@bestcomputing.com.au
Staples Australia Pty Ltd 71 Albert Road BUNBURY WA 6230		(08) 9781 4300	(08) 9791 2578 bunburycustomersupport@staples.com.au
42 Chapman Rd GERALDTON WA 6530	(a),(b),(d),(e)	(08) 9923 4888	(08) 9921 8155 GeraldtonCustomerSupport@staples.com.au
Lot 39 18 Sherlock Crescent KARRATHA WA 6714		(08) 9158 7500	(08) 9185 3071 KarrathaRetail@staples.com.au

Hitachi Data Systems Metropolitan and Regional Dealers

Dealer and Address	Dealer Type	Telephone	Fax/Email
Atos 460 Roberts Road SUBIACO WA 6008	ALL	0420 688 707	Shirley.ngu@atos.net
CSC Australia Pty Ltd Graeme Bydder Level 2 516 Hay Street SUBIACO WA 6008	ALL	0402 819 960	Gbydder2@csc.com
Datacom Systems WA Level 2 184 Adelaide Tce EAST PERTH WA 6004	(a),(b),(d),(e)	(08) 6466 6888	(08) 9380 4226 wasales@datacom.com.au
Fujitsu Australia Limited Level 15 191 St Georges Tce PERTH WA 6000	(a),(b),(c),(e)	(08) 9212 5062	wasales@au.fujitsu.com
Hayes Information Systems Level 3 267 St Georges Tce PERTH WA 6000	(a),(b),(c),(d)	(08) 9261 7788	Duncan Hayes duncan@hayesis.com.au
Hitachi Data Systems Level 12 77 St Georges Tce PERTH WA 6000	ALL	(08) 9421 8106	(08) 9421 8111 Aidan.Kenny@hds.com
Open Systems Supply 55 Lindsay Street PERTH WA 6000	(a),(b),(e)	(08) 6102 3545	(08) 9228 9660 chris@opensystemsupply.net.au
Perfekt Pty Ltd Level 1 100 Havelock Street WEST PERTH WA 6005	(ALL)	(08) 9364 8881	(03) 9330 9933 Craig.tamlin@perfekt.com.au

Portal IT Suite 7 266 Hay Street SUBIACO WA 6008	(a), (b)	(08) 6365 2141 0424 329 188	(08) 6314 6648 Rod.dunstan@portalit.com.au
---	----------	--------------------------------	--

R1i Services 58 Walcott Street MT LAWLEY WA 6050	ALL	(08) 6180 4380	mconway@r1i.com.au
--	-----	----------------	--

Southern Cross Computer Systems Level 18 152 – 158 St Georges Tce PERTH WA 6000	a),b),c)	0418 914 817 (08) 9288 1761	Marcus Tang Mtang@sccs.com.au
---	----------	--------------------------------	---

IBM Australia Metropolitan Dealers

Dealer and Address	Dealer Type	Telephone	Fax/Email
IBM Australia Limited Level 2 1060 Hay Street WEST PERTH WA 6005	All	0405 486 981	(08) 9261 8486 scowans@au1.ibm.com
C&M Solutions 16 Boag Road MORLEY WA 6062	All	(08) 9376 0800	(08) 9375 1141 cmcssales@cmcs.com.au
Data#3 Limited Level 2 76 Kings Park Road WEST PERTH WA 6005	(a),(b),(c),(e)	(08) 9420 0510	Brendan_jansen@data3.com.au
Datacom Systems WA Level 2 184 Adelaide Tce EAST PERTH WA 6004	All	(08) 6466 6888	(08) 9380 4226 wasales@datacom.com.au
Fujitsu Australia Limited Level 15 191 St Georges Tce PERTH WA 6000	(a),(b),(c),(e)	(08) 9212 5062	wasales@au.fujitsu.com
KLB Systems Pty Ltd Unit 1 2 Commerce Street MALAGA WA 6090	All	(08) 9249 7939	(08) 9249 7148 sales@klbsystems.com
Red11 Pty Ltd Unit 3 642 Albany Highway VICTORIA PARK WA 6100	(a),(b),(c),(e)	(08) 9361 2711	mark.smith@red11.com.au
Silverfern IT 3 Somerville Street PERTH WA 6000	(a),(b),(c),(e)	(08) 9328 8788	(08) 9328 8788 sales@silverfern.com.au
Southern Cross Computer Systems Level 18 152 – 158 St Georges Tce PERTH WA 6000	a),b),c)	0418 914 817 (08) 9288 1761	Marcus Tang Mtang@sccs.com.au

Stott + Hoare
28 Hasler Road
OSBORNE PARK WA
6017

All (08) 9244 0000 (08) 9445 7604
sales@stotthoare.com.au

WJ Moncrieff
2 Oswald Street
VICTORIA PARK WA
6100

(a),(b),(c),(e) (08) 9473 3888 (08) 9473 3860
Mark.Carrick@moncrieff.com.au

Xpanse Pty Ltd
18 Emerald Terrace
WEST PERTH WA 6015

(a),(b),(c) (08) 9322 6767 (08) 9322 6077
sales@xpanse.com.au

IBM Australia Regional Dealers

Dealer and Address	Dealer Type	Telephone	Fax/Email
IBM Australia Limited Level 2 1060 Hay Street WEST PERTH WA 6005	All	(08) 9261 8418 (08) 9261 8715	(08) 9261 8536
C&M Solutions 16 Boag Road MORLEY WA 6062	All	(08) 9376 0800	(08) 9375 1141 cmcssales@cmcs.com.au
Data#3 Limited Level 2 76 Kings Park Road WEST PERTH WA 6005	(a),(b),(c),(e)	(08) 9420 0510	Brendan_jansen@data3.com.au
Datacom Systems (WA) Level 2 184 Adelaide Tce EAST PERTH WA 6004	(a),(b),(d),(e)	(08) 6466 6888	(08) 9380 4226 wales@datacom.com.au
KLB Systems Pty Ltd Unit 1 2 Commerce Street MALAGA WA 6090	All	(08) 9249 7939	(08) 9249 7148 sales@klbsystems.com
Southern Cross Computer Systems Lvl 18 152 – 158 St Georges Tce PERTH WA 6000	a),b),c)	0408 957 968	Marcus Tang PSorgiovanni@sccs.com.au

Stott + Hoare 28 Hasler Road OSBORNE PARK WA 6017	ALL	(08) 9244 0000	(08) 9445 7604 sales@stotthoare.com.au
Xpanse Pty Ltd 18 Emerald Terrace WEST PERTH WA 6015	(a),(b),(c)	(08) 9322 6767	(08) 9322 6077 sales@xpanse.com.au

Lenovo (Australia & New Zealand) Metropolitan Dealers

Dealer and Address	Dealer Type	Telephone	Fax/email
CDM Australia 251-257 Scarborough Beach Road MT HAWTHORN WA 6016	(a), (b), (c), (e)	(08) 9202 4444	(08) 9202 4478 lenovosales@cdmaust.com.au
Datacom Systems WA Level 2 184 Adelaide Tce EAST PERTH WA 6004	(a), (b), (c), (e)	(08) 6466 6888	(08) 9380 4226 WASales@datacom.com.au
Silverfern IT 3 Somerville Street PERTH WA 6000	(a), (b), (c), (e)	(08) 9328 8788	(08) 9328 8788 sales@silverfern.com.au
Stott Hoare 86 Walters Drive OSBORNE PARK WA 6017	(a), (b), (c), (e)	(08) 9244 0000	(08) 9445 7604 sales@stotthoare.com.au
WJ Moncrieff 2 Oswald Street VICTORIA PARK WA 6100	(a), (b), (c), (e)	(08) 9473 3888	(08) 9473 3860 sales@moncrieff.com.au

Lenovo (Australia New Zealand) Regional Dealers

Dealer and Address	Dealer Type	Telephone	Fax/email
CDM Australia 251-257 Scarborough Beach Road MT HAWTHORN WA 6016	(a), (b), (c), (e)	(08) 9202 4444	(08) 9202 4478 lenovosales@cdmaust.com.au
Datacom Systems WA Level 2 184 Adelaide Tce EAST PERTH WA 6004	(a), (b), (c), (e)	(08) 6466 6888	(08) 9380 4226 WASales@datacom.com.au
Stott Hoare 86 Walters Drive OSBORNE PARK WA 6017	(a), (b), (c), (e)	(08) 9244 0000	(08) 9445 7604 sales@stotthoare.com.au
WJ Moncrieff 2 Oswald Street VICTORIA PARK WA 6100	(a), (b), (c), (e)	(08) 9473 3888	(08) 9473 3860 sales@moncrieff.com.au

NetApp Australia Metropolitan and Regional Dealers

Dealer and Address	Dealer Type	Telephone	Fax/Email
NetApp Australia Pty Ltd Level 28 140 St Georges Tce PERTH WA 6000	ALL	(08) 9278 2751	(08) 9278 2727 tony.estrano@netapp.com
Alphawest Services Pty Ltd 1260 Hay Street WEST PERTH WA 6005	ALL	(08) 9429 6000	(08) 9429 6030 Perth.salessupport@alphawest.com.au
Cirrus Networks Pty Ltd Level 18 Central Park 152-158 St Georges Tce PERTH WA 6000	ALL	1800 2247 787	accounts@cirrusnetworks.com.au
Data#3 Limited Level 2 76 Kings Park Road WEST PERTH WA 6005	(a),(b),(d),(e)	(08) 9420 0525	1300 32 82 32 WAProduct@data3.com.au
Dimension Data 218 St Georges Tce PERTH WA 6000	ALL	(08) 9311 7111	(08) 9311 7199 wasalessupport@didata.com.au
Empired Ltd Level 13 256 Adelaide Tce PERTH WA 6000	ALL	(08) 9223 1234	(08) 9223 1230 info@empired.com
Fujitsu Australia Limited Level 15 191 St Georges Tce PERTH WA 6000	(a),(b),(c),(e)	(08) 9212 5062	wasales@au.fujitsu.com
Kytec Group Level 3 3-5 Bennett Street EAST PERTH 6004	(a),(b),(c),(e)	1300 282 190	ben.donaldson@Kytec.com.au
NEC Australia Pty Ltd Level 2 503 Murray Street PERTH WA 6000	(a),(b),(c)	(08) 9278 5531	(08) 9278 5500 Amy.Morawa@nec.com.au
Southern Cross Computer Systems Level 18 152 – 158 St Georges Tce PERTH WA 6000	ALL	0408 957 968	PSorgiovanni@sccs.com.au
Xpanse Pty Ltd 100 Colin Street WEST PERTH WA 6005	ALL	(08) 9322 6767	(08) 9322 6077 sales@xpanse.com.au

XSI Data Solutions
Unit1
69 Hay Street
SUBIACO WA 6008

ALL

(08) 9388 2315

(08) 9388 2316

tang@xsidata.com.au

APPENDIX 2: SPECIFICATIONS

Notional Basket

The information in these tables is provided for information only and is the basis of the specifications for the products that will be available under “Pick & Buy”.

Note: Agencies may use these tables or develop their own specifications when requesting quotes from Contractors.

	CATEGORY A1 TOWER CASE			CATEGORY A2 RACK INTENSIVE (STANDARD 19 “ RACK)			CATEGORY A3 BLADE SERVER		
	Entry-Level	Mid-Range	High-End	Entry-Level	Mid-Range	High-End	Entry-Level	Mid-Range	High-End
Configuration	Entry-Level	Mid-Range	High-End	Entry-Level	Mid-Range	High-End	Entry-Level	Mid-Range	High-End
Product Model(s)	Required	Required	Required	Required	Required	Required	Required	Required	Required
Form Factor (RU)	NA	NA	NA	1RU	2RU	4RU	Required	Required	Required
Backplane/Chassis	NA	NA	NA	NA	NA	NA	Required	Required	Required
Blade capacity	NA	NA	NA	NA	NA	NA	Required	Required	Required
Processor(s)	Intel Xeon or equivalent	Intel Xeon or equivalent	Intel Xeon or equivalent	Intel Xeon or equivalent	Intel Xeon or equivalent	Intel Xeon or equivalent	Intel Xeon or equivalent	Intel Xeon or equivalent	Intel Xeon or equivalent
Number of processor sockets supported	One socket	Two sockets	Four sockets	One socket	Two sockets	Four sockets	One	Two sockets	Four sockets
Clock Rate supported (range)	Required	Required	Required	Required	Required	Required	Required	Required	Required
Default processor supplied	Required	Required	Required	Required	Required	Required	Required	Required	Required

Number of Cores supported	One	Two	Four	One	Two	Four	One	Two	Four
Memory type/speed	DDR-3, ECC memory/speed Vendor to specify	DDR-3, ECC memory/speed Vendor to specify	DDR-3, ECC memory/speed Vendor to specify	DDR-3, ECC memory/speed Vendor to specify	DDR-3, ECC memory/speed Vendor to specify	DDR-3, ECC memory/speed Vendor to specify	DDR-3, ECC memory/speed Vendor to specify	DDR-3, ECC memory/speed Vendor to specify	DDR-3, ECC memory/speed Vendor to specify
Default/maximum memory configuration	2GB/maximum Vendor to specify	4GB/maximum Vendor to specify	8GB/maximum Vendor to specify	2GB/maximum Vendor to specify	4GB/maximum Vendor to specify	8GB/maximum Vendor to specify	2GB/maximum Vendor to specify	4GB/maximum Vendor to specify	8GB/maximum Vendor to specify
Expansion slots number & type	Required	Required	Required	Required	Required	Required	Required	Required	Required
Hot swappable Items	Required	Required	Required	Required	Required	Required	Required	Required	Required
NIC	Dual GB Ethernet	Dual GB Ethernet	Dual GB Ethernet	Dual GB Ethernet	Dual GB Ethernet	Dual GB Ethernet	Dual GB Ethernet	Dual GB Ethernet	Dual GB Ethernet
CNA Support	NA	NA	NA	Required	Required	Required	Required	Required	Required
Internal HDD type & size	Required	Required	Required	Required	Required	Required	Required	Required	Required
Internal drive bays	Required	Required	Required	Required	Required	Required	Required	Required	Required
RAID Controller	Raid 0 & 1	Raid 0,1 & 5	Raid 0,1,5,6 & 10	Raid 0 & 1	Raid 0,1 & 5	Raid 0,1,5,6 & 10	Required	Required	Required
Cooling with redundancy	Required	Required	Required	Required	Required	Required	Required	Required	Required

Power supply and connector type (socket type to be specified)\0	Redundant & Hot-swappable	Redundant & Hot-swappable	Redundant & Hot-swappable	Redundant & Hot-swappable	Redundant & Hot-swappable	Redundant & Hot-swappable	Redundant & Hot-swappable	Redundant & Hot-swappable	Redundant & Hot-swappable
Certification	Certification is required for a range of operating systems eg. Windows XenServer, Red Hat and SuSE Linux, Netware 6 and above, Unix variants (Solaris etc), VMware and HyperV. All drivers to be provided as part of delivery.								
Compliance	Compliance with Microsoft’s hardware compatibility list for Windows operating systems is mandatory.								

Panel A - It Server (options)

Contractors should be able to accommodate variations to the above base specification requirements and allow Customers, as required, to include or exclude any or all of the optional specifications below:

Product Options	CATEGORY A1 Tower case	CATEGORY A2 Rack intensive [Standard 19” rack]	CATEGORY A3 Blade Server
Optical Drive unit	Vendor to specify	Vendor to specify	Vendor to specify
Tape Drive	Onboard (vendor to specify)	Onboard (vendor to specify)	Onboard/Expansion Card (vendor to specify)
Hard Drives	Vendor to specify	Vendor to specify	Vendor to specify
Memory	DDR-3, ECC memory/ speed Vendor to specify	DDR-3, ECC memory/ speed Vendor to specify	DDR-3 ECC memory/ speed Vendor to specify
Processors	Intel Xeon or equivalent	Intel Xeon or equivalent	Intel Xeon or equivalent
Host Bus Adapters (HBA)	Vendor to specify	Vendor to specify	Vendor to specify
I/O Cards	Vendor to specify	Vendor to specify	Vendor to specify
Converged Network Adaptor (CNA)	Vendor to specify	Vendor to specify	Vendor to specify
Network Interface Card (NICs)	Vendor to specify	Vendor to specify	Vendor to specify
Systems Management Software	Vendor to specify	Vendor to specify	Vendor to specify
External Storage Support	Vendor to specify	Vendor to specify	Vendor to specify
Pre-Installed Operating System	Vendor to specify	Vendor to specify	Vendor to specify
Remote Management Capability	Vendor to specify	Vendor to specify	Vendor to specify
Mounting Kit/Rails	NA	Vendor to specify	NA
Support and Maintenance option	24 x 7 access to technical	24 x 7 access to technical	24 x 7 access to technical

1 (1,3 & 5year)	support. 24x7x4 hrs onsite	support. 24x7x4 hrs onsite	support. 24x7x4 hrs onsite
Support and Maintenance option 2 (1,3 & 5 year)	24 x 7 access to technical support. 8x5 NBD onsite	24 x 7 access to technical support. 8x5 NBD onsite	24 x 7 access to technical support. 8x5 NBD onsite
Support and Maintenance option 3 (1,3 & 5 year)	24 x 7 access to technical support. 8x5 x 4hr onsite	24 x 7 access to technical support. 8x5 x 4hr onsite	24 x 7 access to technical support. 8x5 x 4hr onsite
Support and Maintenance option 4 (1,3 & 5 year)	NA	24 x 7 access to technical support. 24x7x2 hrs onsite	24 x 7 access to technical support. 24x7x2 hrs onsite
Warranty option 1	Three year parts and onsite labour Option for extended warranty	Three year parts and onsite labour Option for extended warranty	Three year parts and onsite labour Option for extended warranty
Warranty option 2 - Extended five year parts and onsite labour Option upgrade	Additional two years upgrade	Additional two years upgrade	Additional two years upgrade

Category B1 -Storage Solutions

Category B1 -Storage Solutions			
Configuration	High End Tier 0&1 - (Critical Storage) High Availability storage with high performance requirements	Mid Range Tier 2 - (Business Storage) High Availability, at lower cost profile	Entry Level Tier 3 – (Commodity Storage)
Product Model	Vendor to specify	Vendor to specify	Vendor to specify
Product lifecycle	Vendor to specify	Vendor to specify	Vendor to specify
Storage Drive Technology	Vendor to specify	Vendor to specify	Vendor to specify
Feature set licensing model eg CIFS, de-duplication, thin provisioning	Vendor to specify	Vendor to specify	Vendor to specify
Number of storage controllers	Vendor to specify	Vendor to specify	Vendor to specify
Protocols supported/provided	Vendor to specify	Vendor to specify	Vendor to specify
Active/ active controller support	Vendor to specify Yes/No	Vendor to specify Yes/No	Vendor to specify Yes/No
Drive unit storage capacity (i.e. FC HD & SSD)	Vendor to specify	Vendor to specify	Vendor to specify
Maximum # of trays	Vendor to specify	Vendor to specify	Vendor to specify

Number of disks / tray	Vendor to specify	Vendor to specify	Vendor to specify
Maximum raw capacity/ useable capacity	Vendor to specify	Vendor to specify	Vendor to specify
Support for mixed drive types within a tray	Vendor to specify Yes/No	Vendor to specify Yes/No	Vendor to specify Yes/No
Cache	Vendor to specify	Vendor to specify	Vendor to specify
Max # of LUNS	Vendor to specify	Vendor to specify	Vendor to specify
Connection type and speed supported	Vendor to specify	Vendor to specify	Vendor to specify
Number of paths supported (per controller)	Vendor to specify	Vendor to specify	Vendor to specify
Type of port connectors supported (ie LC, RJ45, twinax)	Vendor to specify	Vendor to specify	Vendor to specify
Supported RAID types	Vendor to specify	Vendor to specify	Vendor to specify
Redundancy provisions,	Vendor to specify	Vendor to specify	Vendor to specify
Non disruptive maintenance and upgrade capability (sware & hware)	Vendor to specify	Vendor to specify	Vendor to specify
Fully populated tray weight	Vendor to specify	Vendor to specify	Vendor to specify

Heat output BTU per tray/ controller	Vendor to specify	Vendor to specify	Vendor to specify
Power consumption per tray	Vendor to specify	Vendor to specify	Vendor to specify
Certification	Vendor to specify		
Compliance	Oracle, Windows, Linux, VMware		

Category B1 -Storage Solutions (options)

Options	High End	Mid Range	Entry Level
	Tier 0&1 - (Critical Storage) High Availability storage with high performance requirements	Tier 2 - (Business Storage) High Availability, at lower cost profile	Tier 3 – (Commodity Storage)
Drive units	Vendor to specify	Vendor to specify	Vendor to specify
Trays	Vendor to specify	Vendor to specify	Vendor to specify
Controllers	Vendor to specify	Vendor to specify	Vendor to specify
Cache	Vendor to specify	Vendor to specify	Vendor to specify
Interface modules / cards	Vendor to specify	Vendor to specify	Vendor to specify
Support and Maintenance option 1 (1,3 & 5 year)	24 x 7 technical support and remote monitoring 24x7x4 hrs onsite,	24 x 7 technical support and remote monitoring 24x7x4 hrs onsite,	24 x 7 technical support and remote monitoring 24x7x4 hrs onsite,
Support and Maintenance option 2 (1,3 & 5 years)	24 x 7 technical support and remote monitoring, 8x5 NBD onsite	24 x 7 technical support and remote monitoring, 8x5 NBD onsite	24 x 7 technical support and remote monitoring, 8x5 NBD onsite
Support and Maintenance option	24 x 7 technical support and remote monitoring 8x5 x 4hr	24 x 7 technical support and remote monitoring 8x5 x 4hr	24 x 7 technical support and remote monitoring 8x5 x 4hr

3 (1,3 & 5 years)	onsite	onsite	onsite
Warranty 1	3 year parts and onsite labour Option for extended warranty	3 year parts and onsite labour Option for extended warranty	3 year parts and onsite labour Option for extended warranty
Warranty 2	Additional two years upgrade	Additional two years upgrade	Additional two years upgrade

Category B1 -Storage Solutions (Additional Items)

	Product
Storage management software	Vendor to specify
Other items	Vendor to specify

Category B2 - San Switches

Category B2 - San Switches

Configuration	Entry-Level	Mid-Range	High-End
Product Model	Vendor to specify	Vendor to specify	Vendor to specify
Port licensing model utilised	Vendor to specify	Vendor to specify	Vendor to specify
Default licensed port configuration	Vendor to specify	Vendor to specify	Vendor to specify
Number of ports and speed	Vendor to specify	Vendor to specify	Vendor to specify
Number of slots for hot swap switching modules & controllers	Not applicable	Vendor to specify	Vendor to specify

Redundancy provisions	Vendor to specify	Vendor to specify	Vendor to specify
Aggregate scalability	Not applicable	Vendor to specify	Vendor to specify
Redundant hot-swappable fan tray with integrated temperature and power management	Not applicable	Vendor to specify	Vendor to specify
Aggregate switch bandwidth in Gbps	Vendor to specify	Vendor to specify	Vendor to specify
Port types	Vendor to specify	Vendor to specify	Vendor to specify
Media Types	Vendor to specify	Vendor to specify	Vendor to specify
Supported Protocols (ie iSCSI, FCIP & FCoE)	Vendor to specify	Vendor to specify	Vendor to specify
Availability (ie 99.999)	Vendor to specify	Vendor to specify	Vendor to specify
Virtual San (VSAN) support	Vendor to specify	Vendor to specify	Vendor to specify
Inter brand interoperability	Not applicable	Vendor to specify	Vendor to specify
Support for Fabric Services	Vendor to specify	Vendor to specify	Vendor to specify
Security features & supported	Vendor to specify	Vendor to specify	Vendor to specify

protocols

Diagnostic features and tools	Vendor to specify	Vendor to specify	Vendor to specify
Management Interfaces	Vendor to specify	Vendor to specify	Vendor to specify
Supported management s/ware	Vendor to specify	Vendor to specify	Vendor to specify
Power Consumption (fully populated)	Vendor to specify	Vendor to specify	Vendor to specify
Weight fully populated	Vendor to specify	Vendor to specify	Vendor to specify
Physical dimensions	Vendor to specify	Vendor to specify	Vendor to specify

Category B2 - San Switches (options)

Respondents should be able to accommodate variations to the above base specification requirements and allow Customers, as required, to include or exclude any or all of the optional specifications below:

Options	Entry-Level	Mid-Range	High-End
License port groupings	Vendor to specify	Vendor to specify	Vendor to specify
SFP module upgrade	Specify speed and type	Specify speed and type	Specify speed and type
Additional slot module	Vendor to specify	Vendor to specify	Vendor to specify
Other	Vendor to specify	Vendor to specify	Vendor to specify
Support and Maintenance option 1 (1,3 & 5year)	24 x 7 access to technical support. 24x7x4 hrs onsite	24 x 7 access to technical support. 24x7x4 hrs onsite	24 x 7 access to technical support. 24x7x4 hrs onsite
Support and Maintenance option 2 (1,3 & 5year)	24 x 7 access to technical support. 8x5 NBD onsite	24 x 7 access to technical support. 8x5 NBD onsite	24 x 7 access to technical support. 8x5 NBD onsite
Support and Maintenance option 3 (1,3 & 5year)	24 x 7 access to technical support. 8x5 x 4hr onsite	24 x 7 access to technical support. 8x5 x 4hr onsite	24 x 7 access to technical support. 8x5 x 4hr onsite
Support and Maintenance option 4 (1,3 & 5year)	NA	24 x 7 access to technical support. 24x7x2 hrs onsite	24 x 7 access to technical support. 24x7x2 hrs onsite
Warranty 1	3 year parts and onsite labour Option for extended warranty	3 year parts and onsite labour Option for extended warranty	3 year parts and onsite labour Option for extended warranty
Warranty 2	Additional two years upgrade	Additional two years upgrade	Additional two years upgrade

Category B3 - Storage (TAPE/VTL)

Category B3 - Storage (TAPE/VTL)			
Configuration	Entry-Level	Mid-Range	High-End
Product Model	Vendor to specify	Vendor to specify	Vendor to specify
Compatibility with other backup/archival products on the market	Vendor to specify	Vendor to specify	Vendor to specify
Drive capability & scalability, with LTO4 /5 and other formats	Vendor to specify	Vendor to specify	Vendor to specify
Capability of housing and managing other drive technologies within the same unit.	Vendor to specify	Vendor to specify	Vendor to specify
Slot licensing options	Vendor to specify	Vendor to specify	Vendor to specify
Protocols supported	Vendor to specify	Vendor to specify	Vendor to specify
Connection type and speed supported	Vendor to specify	Vendor to specify	Vendor to specify
Tape slot capacity	Vendor to specify	Vendor to specify	Vendor to specify
Hardware redundancy	Vendor to specify	Vendor to specify	Vendor to specify
Remote management features	Vendor to specify	Vendor to specify	Vendor to specify

SNMP capabilities	Vendor to specify	Vendor to specify	Vendor to specify
Automatic self-discovery, Auto-discovery and auto-configuration for all drives	Vendor to specify	Vendor to specify	Vendor to specify
Barcode recognition	Vendor to specify	Vendor to specify	Vendor to specify
Weight	Vendor to specify	Vendor to specify	Vendor to specify
Dimensions	Vendor to specify	Vendor to specify	Vendor to specify
Power Consumption – fully populated	Vendor to specify	Vendor to specify	Vendor to specify
Other features	Vendor to specify	Vendor to specify	Vendor to specify

Category B3 - Storage (TAPE/VTL Options)

Respondents should be able to accommodate variations to the above base specification requirements and allow Customers, as required, to include or exclude any or all of the optional specifications below:

Options	Entry-Level	Mid-Range	High-End
Tape drives/heads	Vendor to specify	Vendor to specify	Vendor to specify
License modules	Vendor to specify	Vendor to specify	Vendor to specify
Cartridge slot	Vendor to specify	Vendor to specify	Vendor to specify
Magazine	Vendor to specify	Vendor to specify	Vendor to specify
Interface modules	Vendor to specify	Vendor to specify	Vendor to specify

APPENDIX 3: ACCESSING CUA INFORMATION ONLINE

The options available to you to access CUA information including contracted prices, contractor details and order forms will depend on the procurement system used in your agency. Systems available to you could include Oracle or SAP.

If you experience any difficulties locating CUA information, please call the Service Centre on 6551 2020.

Public Authorities with No Dedicated Procurement System

If your agency has no dedicated online procurement system, access the CUA information via [Contracts WA](#).

APPENDIX 4: ORDER/REQUEST FORM

CUSTOMER REQUEST FOR PRODUCTS AND/OR SERVICES UNDER COMMON USE ARRANGEMENTS 13010 FOR THE SUPPLY OF IT SERVERS AND DATA STORAGE DEVICES

ORDER TYPE: (Check one only <input checked="" type="checkbox"/>)	Date:
Purchase Order <input type="checkbox"/> (go to section 1,2 & 4)	
Request for Price Confirmation / Quote <input type="checkbox"/> (complete section 1,3 &4)	

SECTION 1 (Complete for Purchase Order and Customer Quote)

CUSTOMER DETAILS:	
Customer:	
Customer's Representative: Contact Details:	Name: Address: Fax number: Phone number: E-mail:
Reporting Requirements:	
Preferred Payment Method: Purchasing Card <input type="checkbox"/> EFT <input type="checkbox"/> Other <input type="checkbox"/>	
Details of other preferred payment method: 1.	
DELIVERY DETAILS: (Specify address and location, contact person, any delivery acceptance requirements, time requirements, installation requirements, packaging reclaim arrangements etc, if applicable.)	
END USER LICENSING TERMS OR CONDITIONS: The Contractor's End User licensing terms or conditions shall be at the lowest order of precedence within the Customer Contract Documents. The Customer Contract Documents as specified in the Request Conditions and General Conditions of Contract (August 2010) will prevail where any inconsistency occurs with the Contractor End User License terms or conditions. For the avoidance of doubt, the provisions for liability as stated in the General Conditions of Contract (August 2010) will prevail over any liability statements contained in the Contractor's End User License terms or conditions.	

SECTION 2

(To be completed by Customer from the 'Pick and Buy' published CUA prices)

PRODUCT SPECIFICATIONS:

CUA Category:					
Specification	Description	Quantity	Discount off (RRP %)	Unit Price (exc GST)	Unit Price (inc GST)

REGIONAL SURCHARGE (IF APPLICABLE):

--	--	--	--

	Discount off (RRP %)	Unit Price (exc GST)	Unit Price (inc GST)
TOTAL UNIT PRICE (Base CPU):			

	OPTIONS	Quantity	Discount off (RRP %)	Unit Price (exc GST)	Unit Price (inc GST)

PRICES QUOTED ARE:

<input type="checkbox"/> As per contracted prices	<input type="checkbox"/> As quoted: Reference#	<input type="checkbox"/> Other: Reference #
---	--	---

SECTION 3

(Agency to complete only for Customer Quote)

REQUEST NUMBER:

TO:

This Request incorporates the Department of Finance Conditions of Contract, for the Common Use Arrangement (CUA 13010), the attachments (if applicable) and the Customer (Agency) Contract (to be completed when the quote is accepted).

CLOSING TIME:

11:00 AM [insert the Closing Date] Perth, Western Australia

OFFER VALIDITY PERIOD:

The Offer Validity Period is for a period of three months.

SUBMISSION OF OFFER

The Respondent may submit the Offer by hand or by post at:

Offers may not be submitted by facsimile.

The Respondent may submit the Offer electronically at: www.tenders.wa.gov.au .The Offer can only be submitted to www.tenders.wa.gov.au if the size of the Offer is equal to or less than 20 megabytes.

Term of the Customer Contract:

Reporting Requirements:
(Specify if different)

BACKGROUND:

CUSTOMER REQUIREMENTS: (Customer: List any additional requirements, service level agreements, customer requirements, service levels agreements any non-standard specifications if applicable.)

Agreed
(Yes/No)

SPECIAL CONDITIONS: (Specify any variations to standard terms and conditions, additional terms, any acceptance requirements etc, if applicable.)

Agreed
(Yes/No)

DELIVERY DETAILS: (Specify address and location, contact person, any delivery acceptance requirements, time requirements, installation requirements, packaging reclaim arrangements etc, if applicable.)

ATTACHMENTS TO THIS REQUEST: Yes/No
1.
2.

(To be completed by CUA Panel Contractor)

PRODUCT SPECIFICATIONS:	
CUA Category:	

Specification	Description	Quantity	Discount off (RRP %)	Unit Price (exc GST)	Unit Price (inc GST)

REGIONAL SURCHARGE (IF APPLICABLE):			
--	--	--	--

	Discount off (RRP %)	Unit Price (exc GST)	Unit Price (inc GST)
TOTAL UNIT PRICE (Base CPU):			

	OPTIONS	Quantity	Discount off (RRP %)	Unit Price (exc GST)	Unit Price (inc GST)

PRICES QUOTED ARE:		
<input type="checkbox"/> As per contracted prices	<input type="checkbox"/> As quoted: Reference#	<input type="checkbox"/> Other: Reference #

SECTION 4		
(CONFIRMATION BY CONTRACTOR)		
Name of Contractor:		
Contractor ABN and/or ACN:		
Name of Contractor contact person:		
Phone:	Fax:	Email:
Name of Authorised Contractor Representative:		
The Contractor agrees that the rates quoted are no more than the maximum rates quoted under this CUA: Yes <input type="checkbox"/> No <input type="checkbox"/>		
If No, provide details:		
Authorised Signature:		
Date:		

ACCEPTED PAYMENT METHOD:
Purchasing Card (specify if limit applies) _____ <input type="checkbox"/> EFT <input type="checkbox"/> OTHER <input type="checkbox"/>
PAYMENT / INVOICING DETAILS: (Advise payment method, invoicing instructions).
1.